

90mm

90mm

C:100 M:93 Y:29 K:0

C:0 M:60 Y:100 K:0

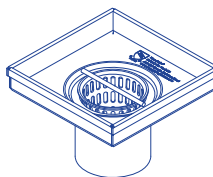
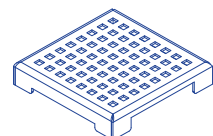
INSTALLATION INSTRUCTIONS

ZS3 SERIES SQUARE DRAIN

6"x6"x2.95" / 4"x4"x2.95"
OD 2" vertical outlet
AISI 304 stainless steel
Flow rate: 8.5GPM
Load Class: Pedestrian



ASME A112.18.2-2015/CSA B125.2-15



Bernkot Home Technology Co., Ltd.
Support@bernkot.com

NO TE:

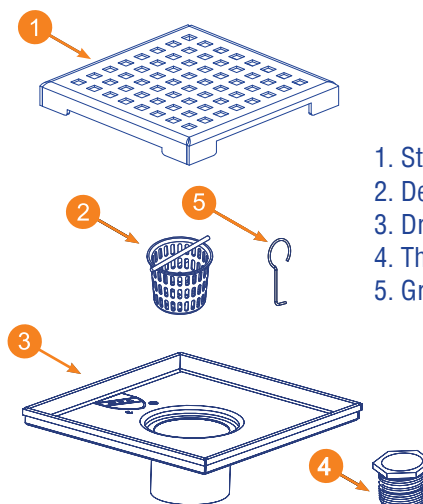
Please carefully read the following instructions prior to proceeding with the installation. The warranty will be void if the product is installed with a conspicuous defect.

■ Thoroughly inspect all components before starting the installation. If you find any items be damaged or lacked, please contact Bernkot or retailers at soonest possible, your questions will be responded within 24 hours.

■ After installation, maybe some "yellow spots" appear on the stainless steel surface, they are only the surface rust caused by aggressive substance such as sealant and adhesive. Recommend using scour pad to remove such "spot", and always brushing in the direction of the grain.

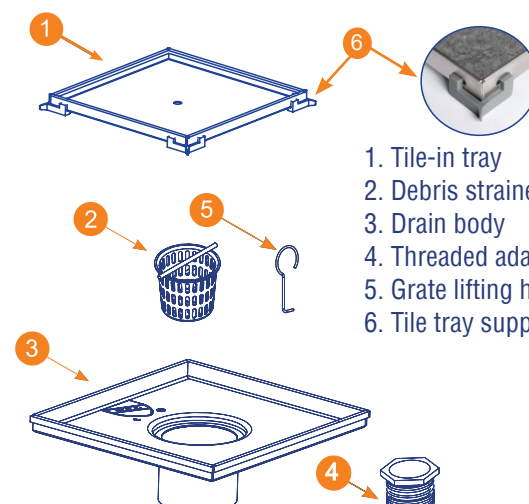
■ For polished, matte black and oil rubber bronze finishes, we recommend cleaning with mild soap and soft cloth. Do not use abrasive cleaners, ammoniated products, rubbing alcohol, detergents, astringents, bleach based cleaners, aggressive chemicals, abrasive cleaning pad, or harsh polishes on the fixture. Use of such substance may void the warranty.

Components of grating style



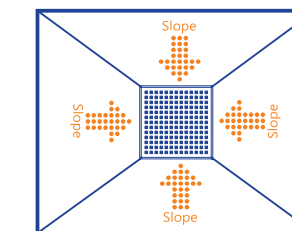
1. Stainless grating
2. Debris strainer
3. Drain body
4. Threaded adapter
5. Grate lifting hook

Components of tile-in style



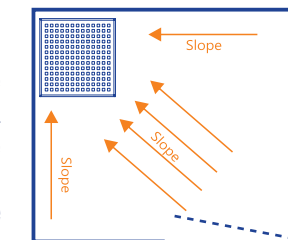
1. Tile-in tray
2. Debris strainer
3. Drain body
4. Threaded adapter
5. Grate lifting hook
6. Tile tray supporters

Placement

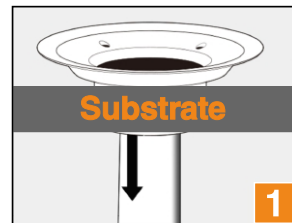


Using a single square drain in the shower area, floors must be graded appropriately or other barriers must be used to prevent flow of water into bathroom area.

If the square drain will be set in a spot without underneath access, such as in a concrete floor or an upper floor with a finished ceiling that won't be opened, then the drain will need to be roughed-in before setting the unit in place.



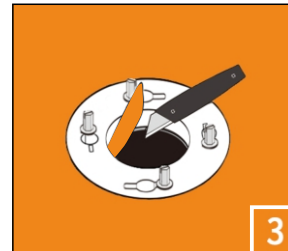
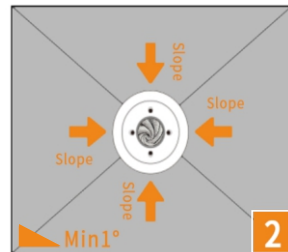
Typical Installation Steps //



Disassemble the drain coupling, install the base to the waste pipe and secure it in place. If use PVC pipe, glue with PVC cement. If use No-Hub rubber coupling, fasten with screw driver.

Always consult with a licenced professional during installation.

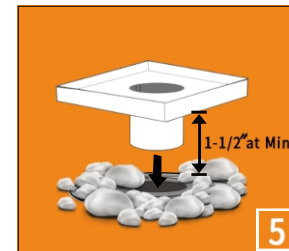
Stuff a rag into the drain opening. Apply floor mortar to build up the shower pan liner, the surface should be slope of 1°, approx 1/4" per foot toward the drain. Allow the mortar to cure 12 hours.



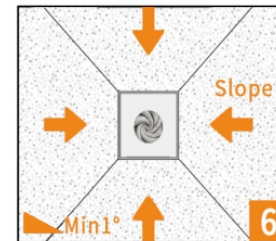
Press the waterproof membrane down around the bolts, use utility knife to cut a slit for the bolts to poke through, afterwards cut away the waste hole in the center.



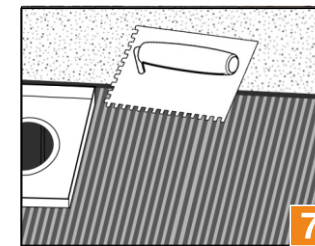
Install the coupling plate, tightening the bolts evenly and firmly to create watertight seal once the membrane installed. Spread the pea gravel or tile spacer over the weep holes to prevent mortar from plugging the hole.



Insert drain body into waste hole, adjust the height to accomodate to planned floor, make sure the height from the top edge to the coupling plate not less than 1-1/2".



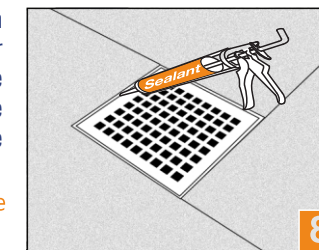
Apply dry pack mortar to build up the second mortar bed, the surface must have minimum drainage slope of 1°, approximately 1/4" per foot toward the drain. Leaving space of tile thickness and thinset along the seam.



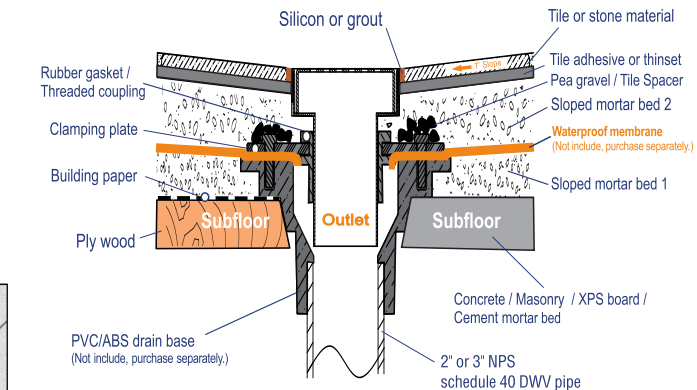
After the second mortar bed cured for 12 hours, install the floor tile with thinset or tile adhesive.

Fill the gap around the drain body with silicone bead or grout. Take away the dustcloth, finalize the installation by laying the strainer and grating.

Note : Wait for 24 hours before using your shower.



Typical Installation - 2 layers of sloped mortar bed



Note:

1. Solvent-weld (glue) to same material DWV pipe with correct solvent cement.
2. Made of plastic, do not work with Hot-mop waterproof to avoid deformation.
3. Mortar bed 2 plus tile and adhesive should be not less than 1-1/2" (40mm)
4. Consider the drain base diameter when you install the drain against the wall .